



Understanding a 'brightspot' of fire management in the Brazilian Amazon: collaborative action for a positive fire future

Postgraduate Researcher

Grania Power

Supervisors

Rachel Carmenta; Matthew Jones; Iokine Rodriguez-Fernandez; Liana Anderson

The increasing problem of tropical fire



Image credit: Getty Images

Uncontrolled fire impacts upon human wellbeing, most directly of local communities

Uncontrolled fires increasing in frequency, scale and intensity in Amazonia and elsewhere in the global tropics

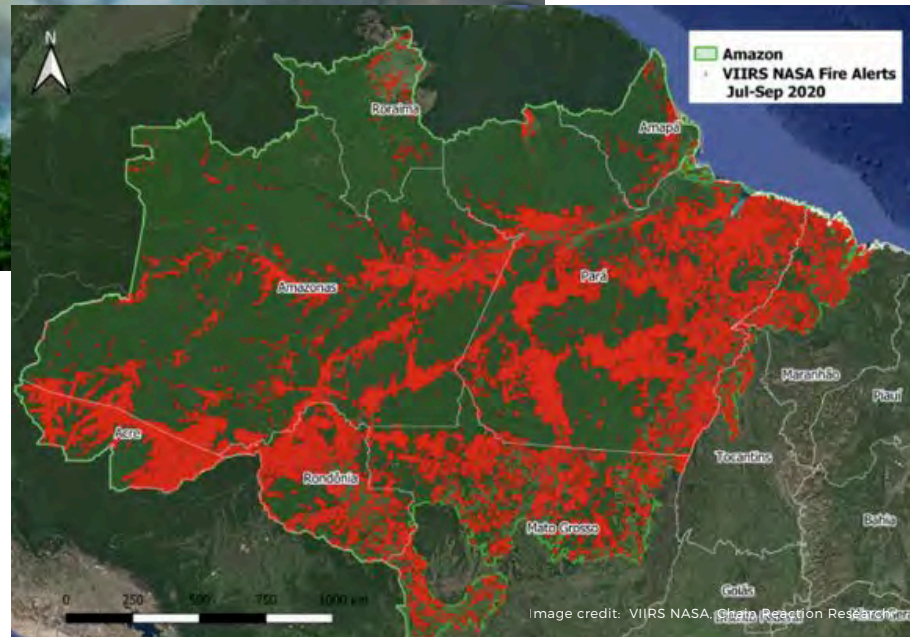


Image credit: VIIRS NASA, Chain Reaction Research



The “brightspots” concept applied to tropical fire



NOBLE ET AL 2006



CINNER ET AL 2016



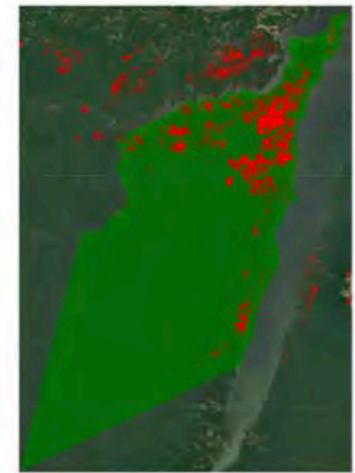
LOPEZ-ARGANITA ET AL 2021



The RESEX Tapajós-Arapiuns represents an emerging brightspot



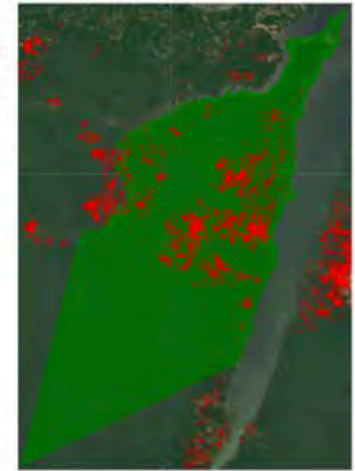
1997
Burned Area:
7.11 km²
(710.73 ha)
Source:
MapBiomas



1998
Burned Area:
406.34 km²
(40634 ha)
Source:
MapBiomas



2015
Burned Area:
44.72 km²
(4472.19 ha)
Source:
MapBiomas



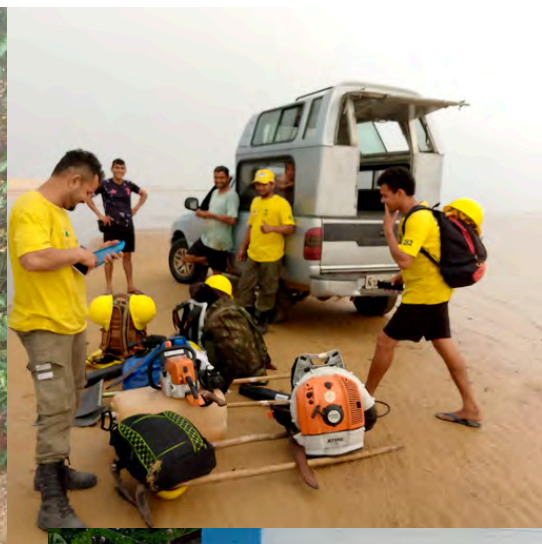
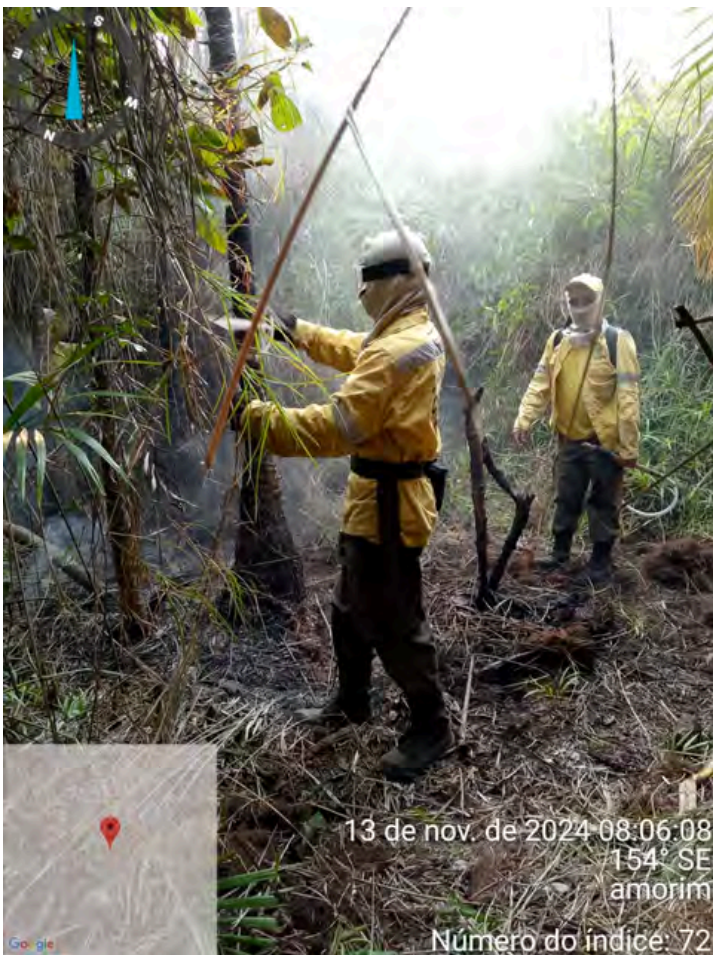
2016
Burned Area:
416.18 km²
(41618 ha)
Source:
MapBiomas



2023
Burned Area:
23.02 km²
(2302 ha)
Source:
MapBiomas

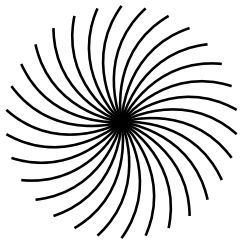


2024
Burned Area:
25.05 km²
(2505.20 ha)
Source:
MODIS



Brigades make use of diverse knowledge systems and draw support from diverse partners who share their values





Thank You

